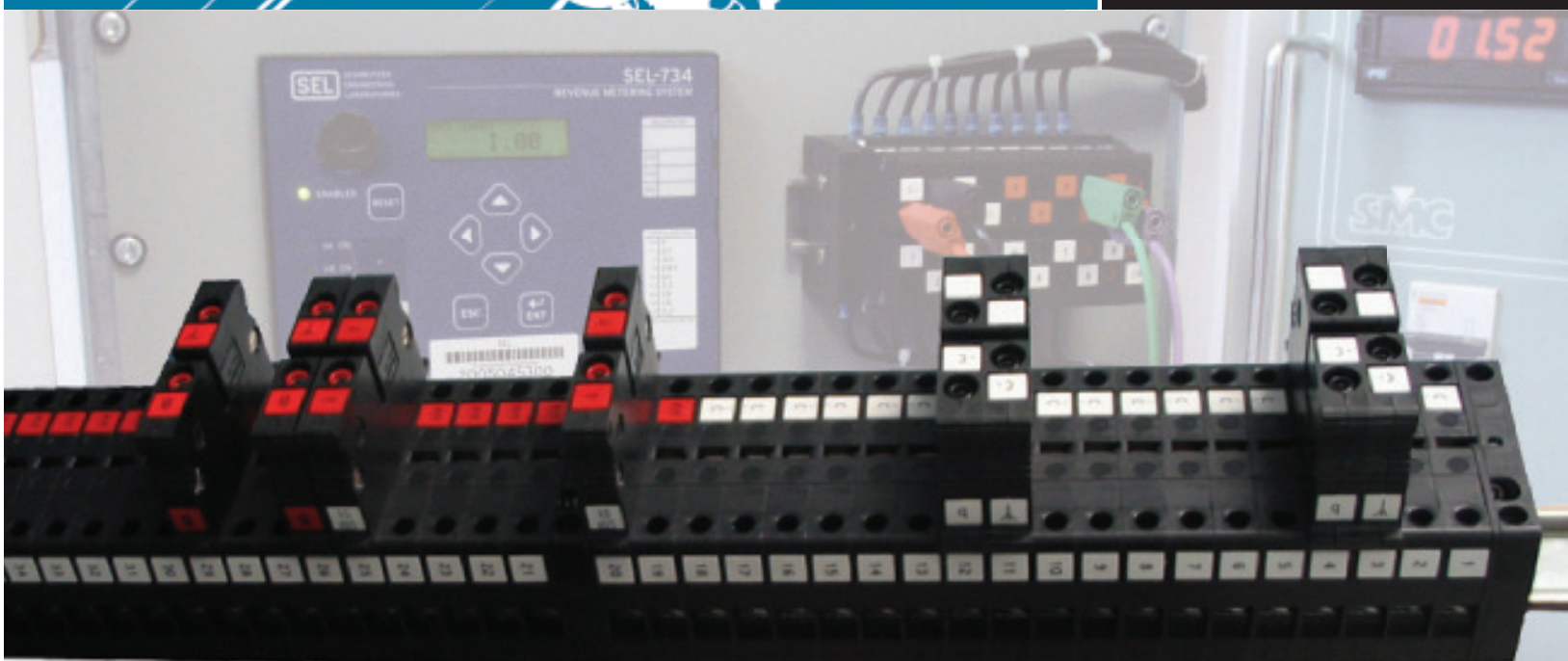


# SAX

Secu Access

Testing Solutions  
for  
Electric Power



**TERMINAL & TEST BLOCK  
MOUNT & CONNECT FLEXIBLY**

Patent Pending

## Terminal and Test Block in One

One device - two functions: The Secu Access (SAX) terminal / test block is designed to make testing easier, faster and safer. Mounted next to the device, it serves as a terminal block. Testing is easily facilitated by inserting a test probe. Current shorting plugs automatically establish a short-circuit when inserted.

## Areas of Application

Secu Access is exceptionally versatile. Use it in a wide range of applications, including:

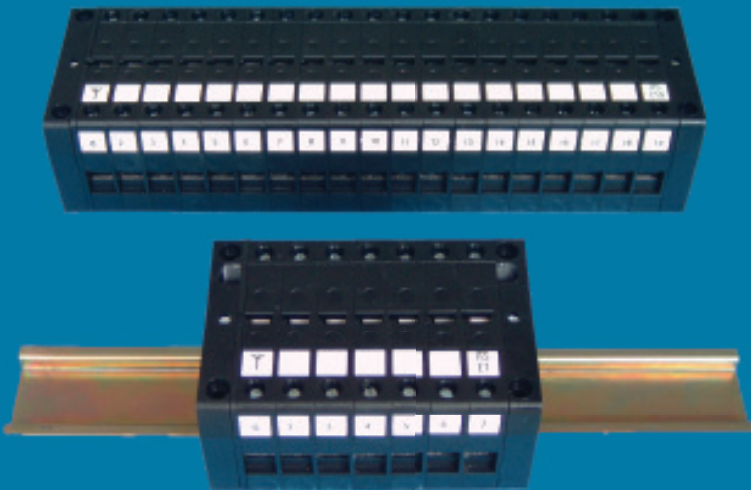
- Meter testing
- Relay testing
- CT current measurement

## Advantages

Gain quick and safe access to circuits with Secu Access. Testing can begin immediately after test plug insertion. Because SAX serves both as a terminal and test block, you can save much wiring time and panel space needs. SAX installation is as easy as can be. Choose DIN-rail or screw-mount, and connect stripped wire or crimp connectors. You can design your custom configuration of current, potential and signal modules. Select your own label colors and inscriptions.

## Modular Design

The terminal / test block is built modularly. Each contact module is housed in a durable and flame retardant plastic shell that provides the best possible insulation. The terminal / test block has a low internal resistance of 2 m $\Omega$  and can be used with 1 A current transformers (CT's).



### Terminal / Test Block Module

- Two silver coated copper contacts
- Pressure springs hold contacts in place and guarantee a lasting, high-quality connection
- Contact openings keyed for correct pin insertion

## Features

### Increase Safety

- Automatic & reliable short-circuiting of CT circuits (make-before-break function)
- Ensures block and plug match with keying system
- Clear labeling on all sides
- Guarantees finger safety by limiting exposed metals

### Save up to 25% Wiring Time & Panel Space

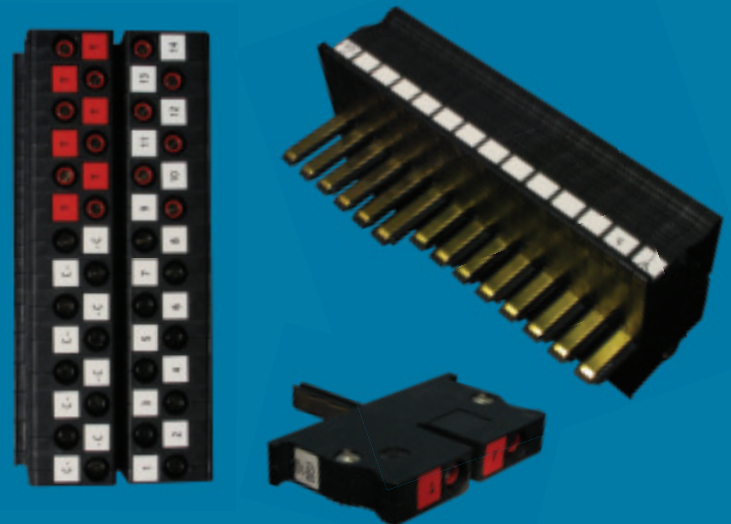
- Just connect SAX to relay, meter or other device
- No need for separate test switches
- Eliminate unused contacts with our modular design

### Test Efficiently

- Plug & Test functionality once connected to test set
- Use multi-contact test plugs to open contacts simultaneously
- Reduce your setup time by pre-wiring plug to test set
- Establish testing routines for similar devices
- Test during operation

### Mount & Connect Flexibly

- Surface mount (DIN-rail or screw-mount)
- No panel cutouts necessary
- Connects to stripped wire and many types of crimp connectors

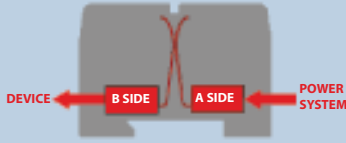


### Test Probe / Plug Module

- Brass pins insulated with plastic and keyed to ensure proper insertion
- Long and short pins for automatic opening sequence (multi-contact plug)
- CT circuits shorted by pre-assigned shorting bars between modules

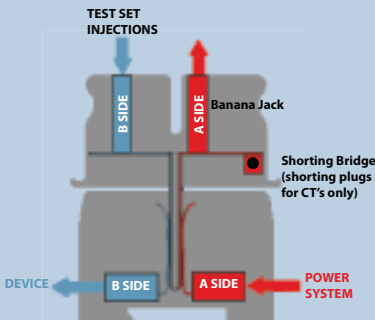
## Functional Principle

### Normal Operation



SAX connects power system and device, e.g. a meter. Two silver-coated copper contacts ensure very low internal resistance. Current flows through the terminal / test block, test plug is not connected.

### Test Operation



Test plug module is inserted into SAX module.

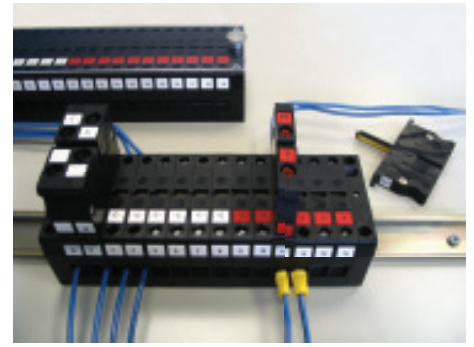
- Power system and device are separated
- Current shorting plugs: automatic CT-shorting
- Module is ready for testing

With the use of a larger test plug, several contacts are opened upon plug insertion in an automated operating sequence.

Test during operation is possible with the connection of a backup device on the A-side of the test plug.

## Multiple Mounting Options

Simply mount Secu Access on DIN-rail, or attach with four screws directly to an even surface. Dust covers affix with two knurled screws to the terminal / test block.



## Safety Advantage

- Safe to touch
- Current modules are keyed to allow only current probes

## Versatile Wiring System

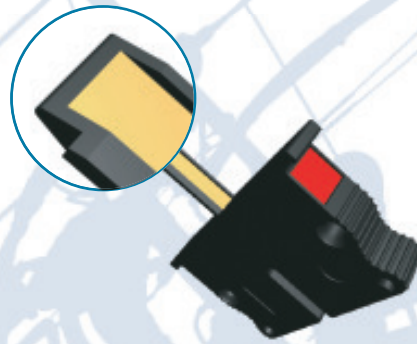
Wiring is easy with Secu Access. The newly developed Secu Screw attaches to stripped wire and many types of crimp connectors. The screw works in combination with an internal pressure pad to guarantee a safe connection. Tighten with a screwdriver. Screws are fixed and cannot be lost.



## Clear Labeling

Secu Access has labels in front and on both sides. Custom colors and inscriptions are available.

## Keying System



Secu test probes (STP) are used with the SAX terminal / test block for testing. Current testprobes with built-in shorting bridge guarantee safe shorting of current transformer (CT) secondary circuits. Terminal / test block openings and test probes are keyed so that only current probes can be inserted into SAX openings for currents. Banana jacks allow easy connection with a testset.

## STP Test Probes

- 1-pole for voltages or signals
- 1-pole for current measurement (fixed cables for direct connection to a measuring instrument)
- 2-pole for currents with shorting bar
- 4-pole for currents with shorting bar

Special configurations are available. Longer testplugs offer additional advantages and allow the opening of several contacts in a defined sequence.

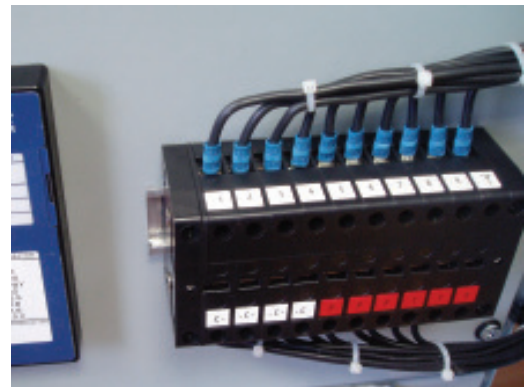
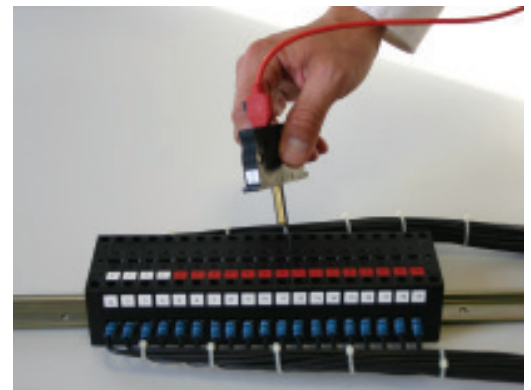
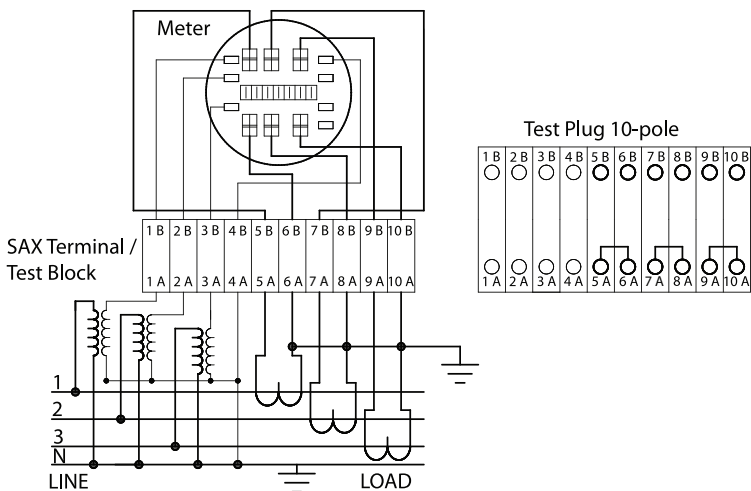


  
**SecuControl**<sup>®</sup>

## SAX Terminal / Test Block Technical Data

<b>Current Withstand</b>	30 A continuously 500 A for 1 sec
<b>Maximum Voltage</b>	600 V
<b>Contact Resistance</b>	typical max. 1.25 mΩ
<b>Dielectric Withstand</b>	5 kV rms for 1 min between adjacent contact pairs and between any contact pair and other metal parts 2.5 kV rms between open contacts, when plug is inserted IEC 60255-5:2000
<b>Voltage Impulse</b>	3 positive and 3 negative impulses of 5 kV peak, 1.2/50 μs, 0.5 J between adjacent contact pairs and between all contact pairs and other metal parts IEC 60255-5:2000
<b>IEEE SWC</b>	4 kV peak fast transient 2.5 kV peak oscillatory IEEE C37.90.1: 1989
<b>Enclosure Protection</b>	IP 20 IEC 60529:2001
<b>UL94 Flammability Class</b>	V-0 (test block and test plug plastic housing)

## Application Example



**SecuControl**<sup>®</sup>

SecuControl, Inc.  
2873 Duke Street  
Alexandria, VA 22314  
USA

PH: 703.838.7677

FX: 703.838.1661

[www.secucontrol.com](http://www.secucontrol.com)

© SecuControl, Inc. 09/2008

Due to continuous improvement of the product, SecuControl, Inc. reserves the right to change the content of this flyer without further notice.

[www.secucontrol.com](http://www.secucontrol.com)