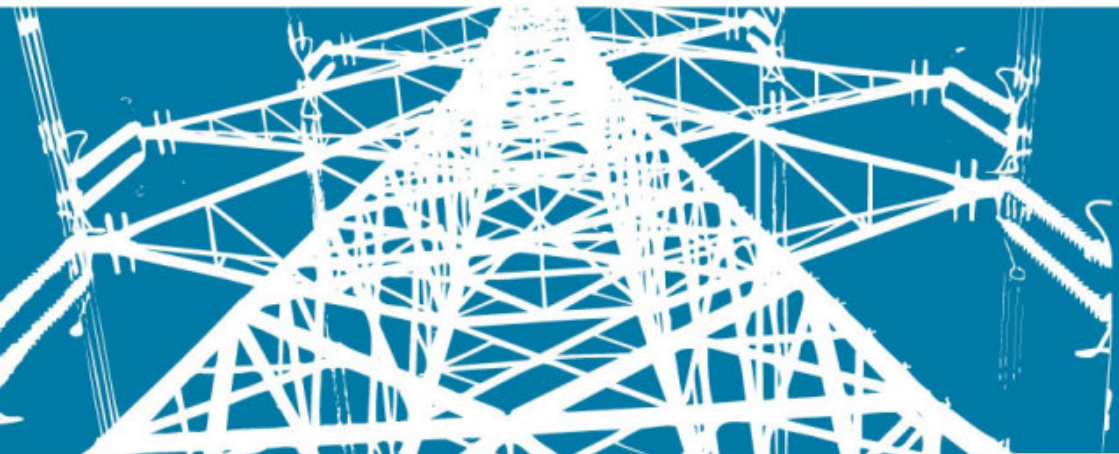


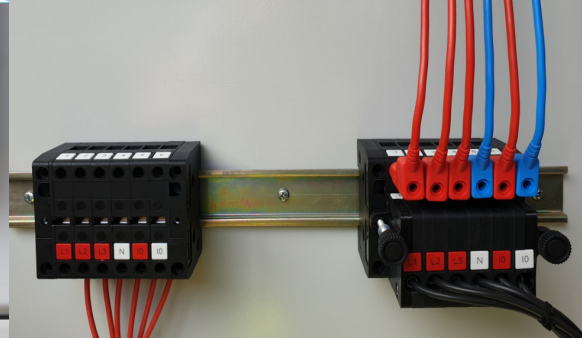
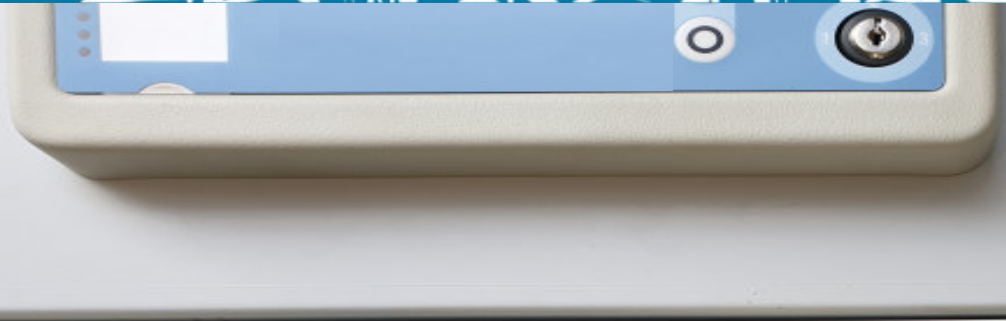
**NEW**

**SecuControl**<sup>®</sup>

# ICE Interface Control Equipment

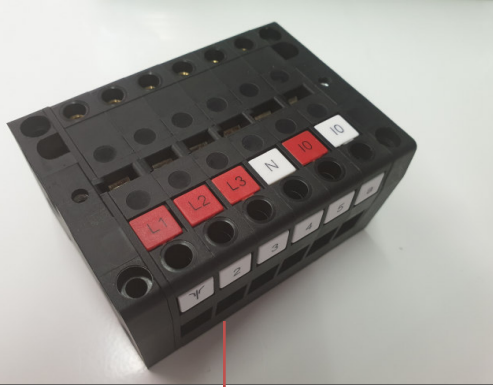


Testing Solutions  
for  
Electric Power



Plug – In – Plug – Out Solution  
for modern panels

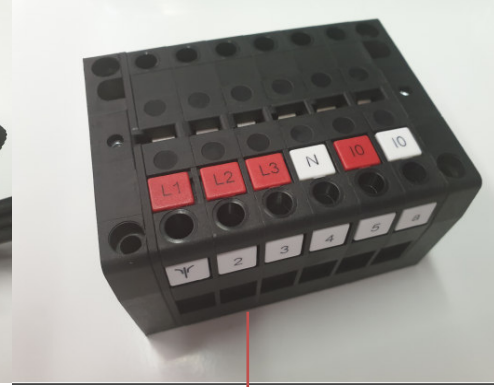




ICET Block



ICEM Plug

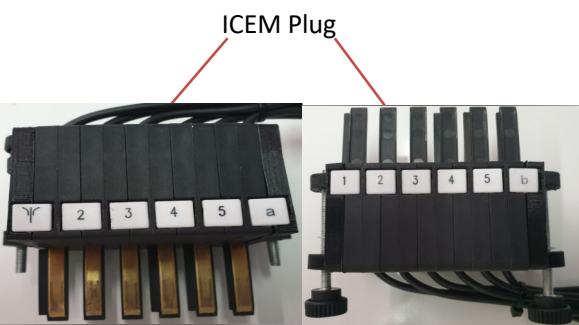
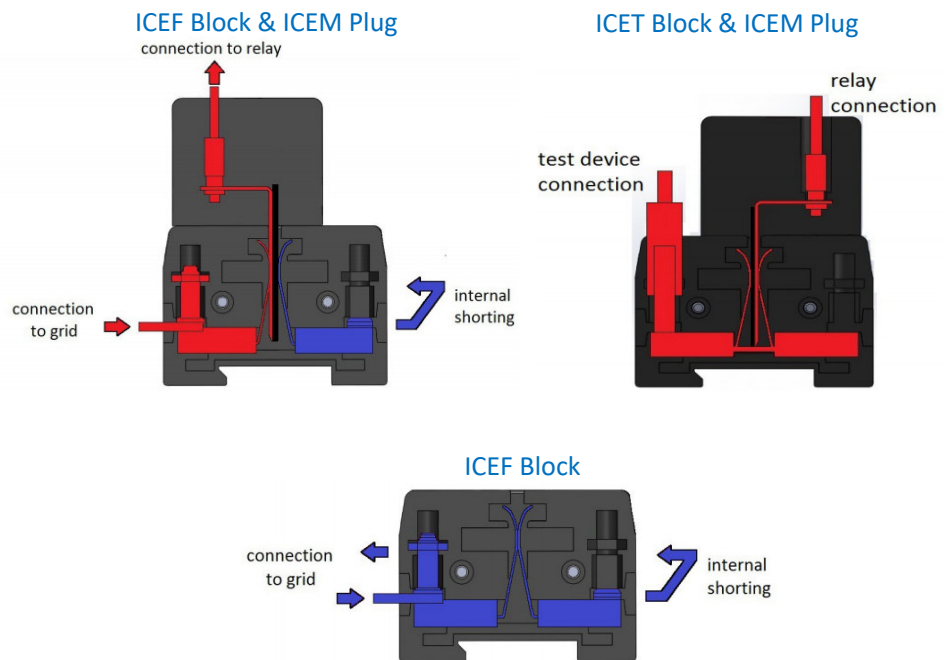


ICEF Block

## Key Features

- Plug-in connection system for all types of protective relays
- Modern and cost-saving assembly of entire protective cabinet systems by means of a plug - in - plug - out solution
- Easy removal and installation of new protective relays, simple testing even during operation
- Increased safety due to coded switching system and anti-arcing design
- Easy to read and adapt to all existing circuit diagrams
- Adaptable labeling

## Principle of Operation



## Technical Specifications

<b>Current withstand</b>	30 A continuous 500 A for 1 Second
<b>Maximum voltage</b>	600 V
<b>Contact resistance</b>	≤ 2mΩ
<b>Dielectric withstand</b>	3.kV RMS 1 minute between adjacent contact pairs and between any contact pair and other metal parts 3.0 kV RMS for 1 minute between open contacts when test pin is inserted
<b>Voltage impulse</b>	3 positive und 3 negative impulses of 5 kV peak, 1.2/50 μs, 0.5 J between adjacent contact pairs and between all contact pairs and other metal parts
<b>UL94 flammability class</b>	V-0
<b>Enclosure protection</b>	IP 50

**SecuControl**®

[www.secucontrol.com](http://www.secucontrol.com)

### Europe

Secucontrol Produktions GmbH  
Ascherslebener Str. 3  
06333 Hettstedt, Germany  
Tel.: +49 3573 80 99 048  
E-Mail: [info@secucontrol.com](mailto:info@secucontrol.com)

### North America

SecuControl, Inc.  
4721 Eisenhower Avenue  
Alexandria VA 22304, USA  
Tel.: +1 703 838 7677  
E-Mail: [mail@secucontrol.com](mailto:mail@secucontrol.com)

### South America

SecuBrasil Ltda  
Rod. Jose Carlos Daux, 8600  
88050-001 Florianopolis SC, Brazil  
Tel.: +55 48 3371 1670  
E-Mail: [comercial@secubrasil.com](mailto:comercial@secubrasil.com)