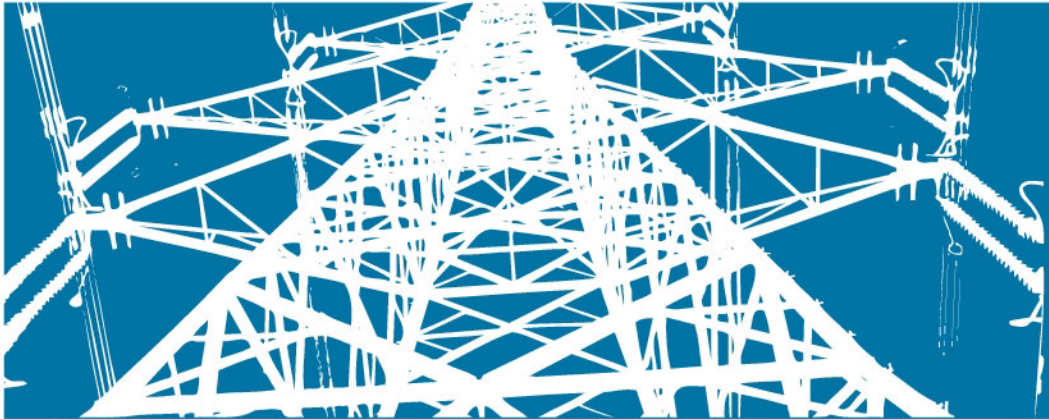


## ITS / STP Test Blocks & Plugs



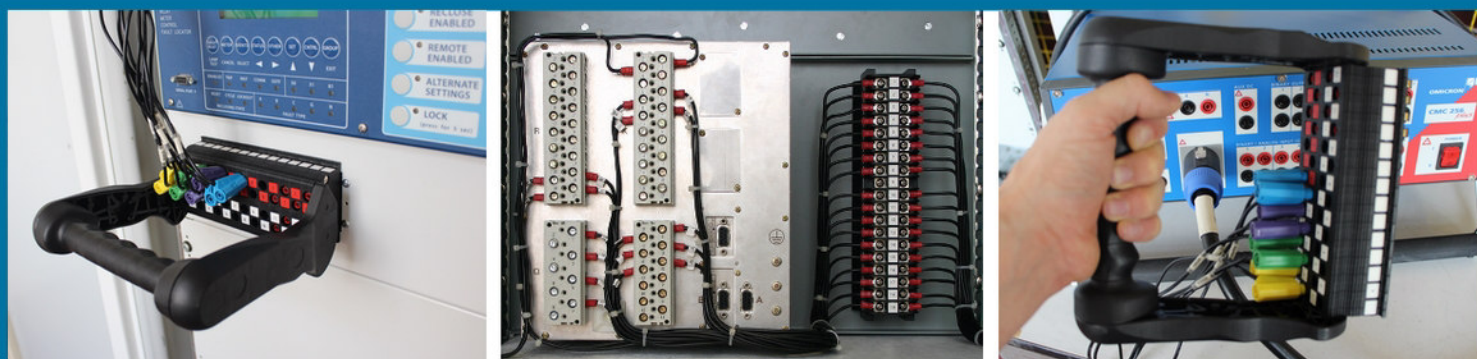
Testing Solutions  
for  
Electric Power



**INCREASE SAFETY & EFFICIENCY**

**SAVE MONEY & SPACE**

Patented



The ITS is a test block for interfacing substation devices (protection relays, fault recorders, revenue meters, . . . ) to the voltage and current transformers and to other equipment on the system side of a power grid.

STP is a test plug keyed to a particular configuration of ITS Test Blocks. Once inserted into the corresponding test block, the STP Test Plug isolates the substation device from the system side equipment. Once the test plug is inserted the secondary injection can be performed.

## Key Features

- Finger-safe test block and test plug increase safety during testing
- Test plugs are keyed to the corresponding test blocks and help eliminate human errors during testing
- Built-in automatic operating sequence prevents spurious breaker operation
- Extremely low internal resistance ( $< 2 \text{ m}\Omega$ ) helps reduce heat inside cabinets and panels and decreases the risk of saturation when using 1 A current transformers
- Available in 7 to 20 pole configurations
- Facilitates efficient, standardized testing procedures

## Technical Specifications

<b>Current withstand</b>	30 A continuous 500 A for 1 second
<b>Maximum voltage</b>	600 V
<b>Contact resistance</b>	$\leq 2 \text{ m}\Omega$
<b>Dielectric withstand</b>	3.0 kV RMS for 1 minute between adjacent contact pairs and between any contact pair and other metal parts 2.0 kV RMS for 1 minute between open contacts when test plug is inserted
<b>Voltage impulse</b>	3 positive and 3 negative impulses of 5 kV peak, 1.2/50 $\mu\text{s}$ , 0.5 J between adjacent contact pairs and between all contact pairs and other metal parts
<b>UL94 flammability class</b>	V-0
<b>Enclosure protection</b>	IP20 (without optional cover)

ITS / STP has been classified as electromagnetically benign by the Guide for the EMC Directive 2004/108/EC and is, therefore, excluded from the scope of the EMC Directive.

ITS / STP meet or exceed all requirements from ANSI / IEEE C37.90-2005.

**SecuControl**<sup>®</sup> [www.secucontrol.com](http://www.secucontrol.com)

**North America**  
SecuControl, Inc.  
2873 Duke Street  
Alexandria, VA 22314, USA  
ph: +1 703 838 7677  
mail@secucontrol.com

**Europe**  
SecuControl GmbH  
Ascherslebener Str. 3  
D-06333 Hettstedt, Germany  
ph: +49 3476 550 022  
info@secucontrol.com

**South America**  
SecuBrasil Ltda  
Rod. Jose Carlos Daux, 8600  
88050-001 Florianopolis SC, Brazil  
ph: +55 48 3371 1670  
comercial@secubrasil.com